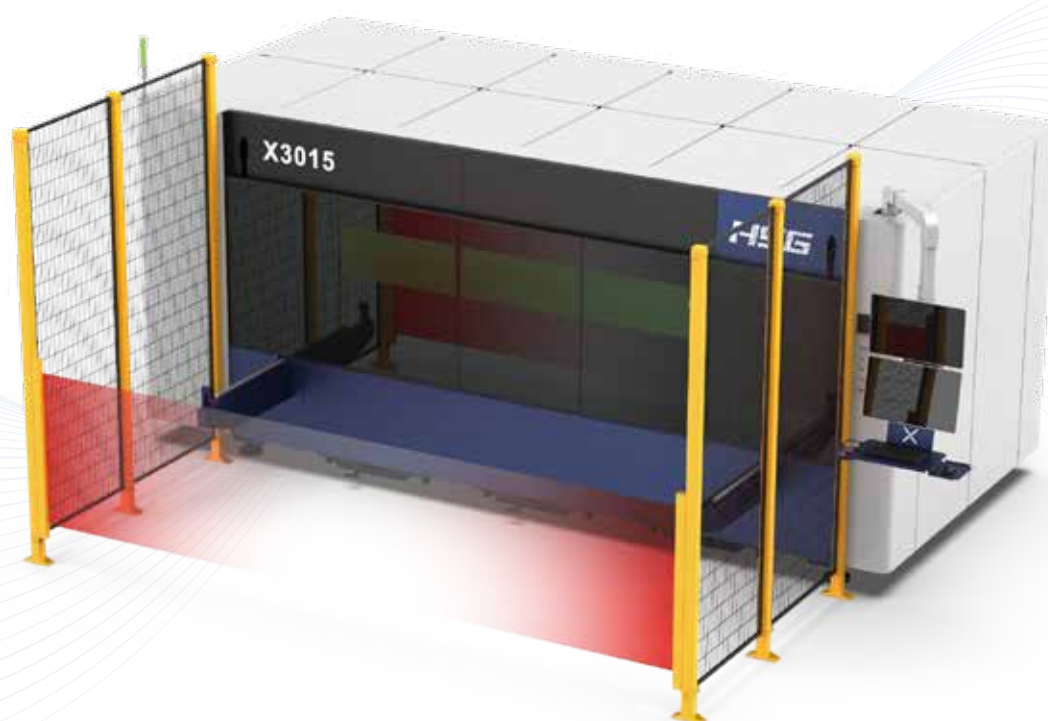




Cutting | Bending | Welding | Automation

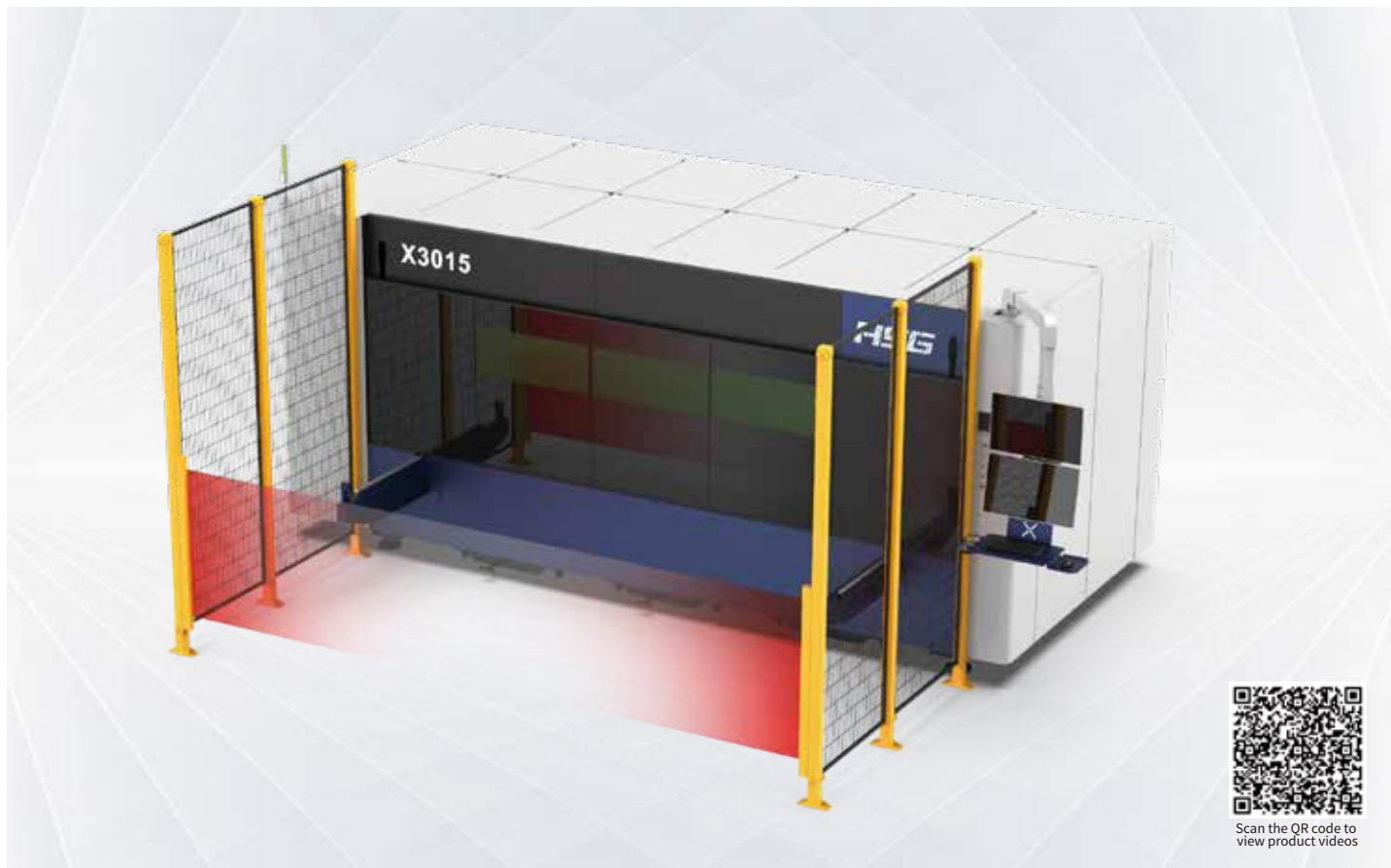


X

✦ Compact Laser Cutting Machine ✦

X 1500-12000W

Compact Laser Cutting Machine



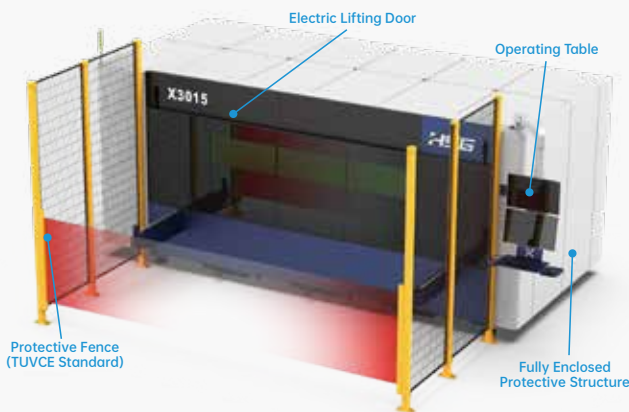
Technical Parameters

Technical Parameters	X3015
Power	1500W-12000W
Processing format (L*W)	1500W-6000W: 3048mm*1524mm 12000W: 3000mm*1500mm
X/Y-axis positioning accuracy	±0.03mm/m
X/Y-axis repositioning accuracy	±0.03mm
Max. Linkage Speed	120m/min
Max. Linkage Acceleration	1.5G
Max. Loading Weight of Platforms	1000kg(30mm Whole board)

* Machine appearance, technical parameters, function description, data comparison shown in this page are from HSG in-house laboratory. All testing results and experimental data shall be subject to real machine.

Compact design, small footprint

- The design concept of the X series cutting machine is to minimize equipment size while ensuring processing capability, reducing equipment footprint, and saving space for customers.

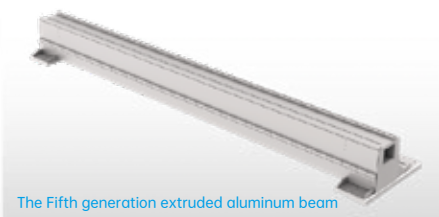


Full protective structure, compliant with TUVCE certification standards

- The equipment adopts a fully enclosed structure with OD glass to prevent laser radiation; grilles, fences, and monitoring further prevent machine operation from causing harm to humans.

High Stability and Long-lasting Durability

- The bed is covered with manganese steel anti-burn plates, effectively blocking laser heat and avoiding thermal deformation. The fifth-generation extruded aluminum beam significantly improves torsional resistance, ensuring stable operation and durability of the equipment.





High processing efficiency Strong processing capability

- The overall machine acceleration reaches 1.5G, greatly improving processing efficiency. The cutting worktable can bear a sheet weight of up to 1000kg, meeting the highest thickness of 30mm for whole sheet processing, resulting in higher processing capability.

Secondary processing positioning system

- The workbench is equipped with mechanical positioning blocks and cylinder clamping to ensure the stability of secondary processing positioning.

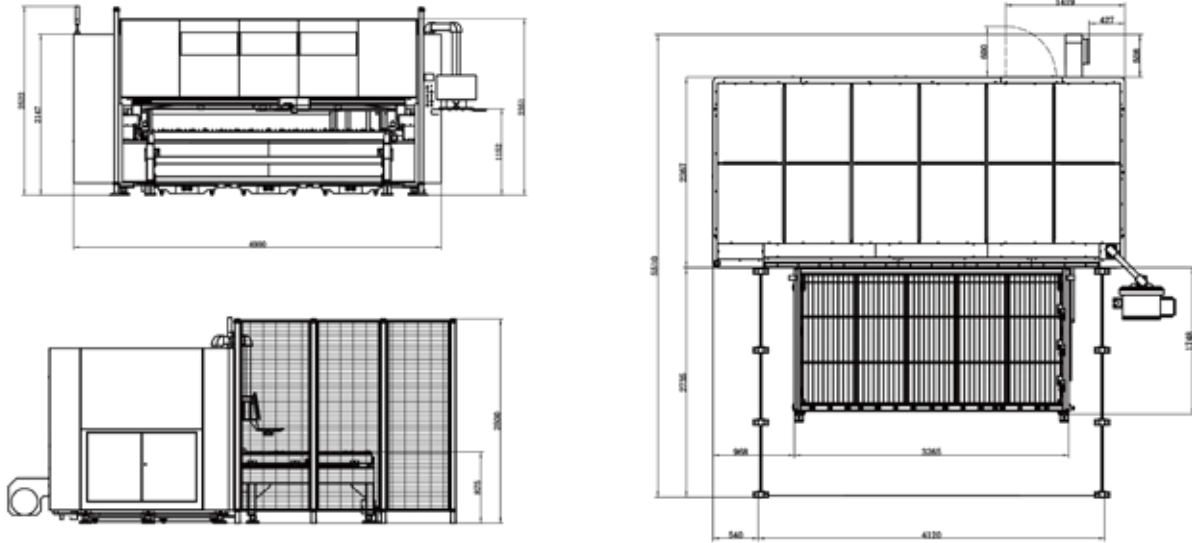


Richer system functionality

- Utilizing HSG's self-developed Alpha2.0/Plus bus system, integrating a wealth of sheet metal processing techniques: lightning piercing, disk centering, slag removal after piercing, seamless micro-welding, perfect tool retraction, etc., making sheet metal cutting simpler.

Machine Foundation

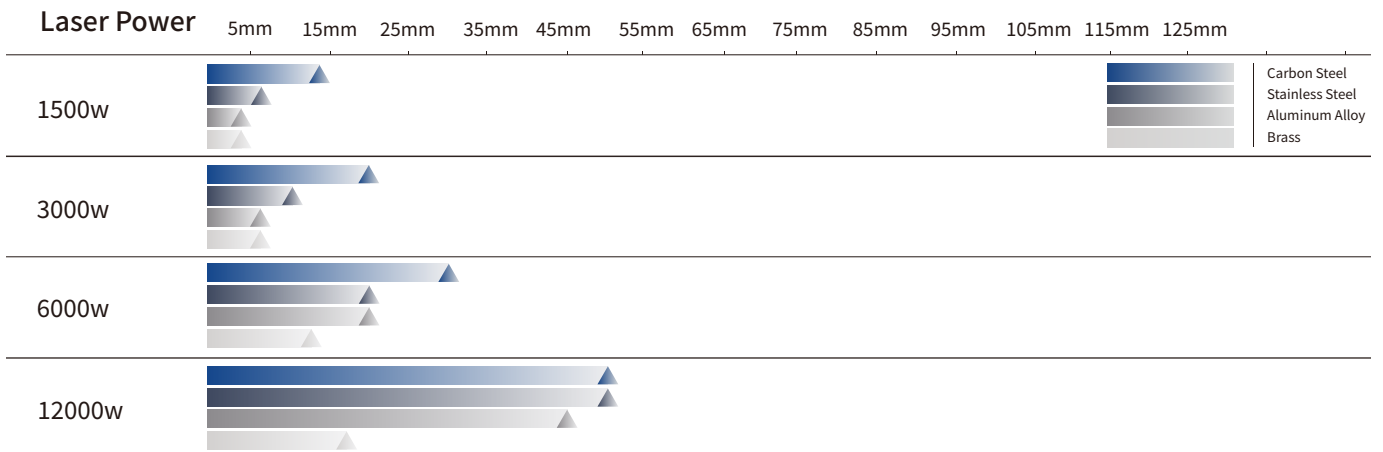
*The marked size has about 10mm error



Cutting Samples



Cutting Capacity



The actual machines shall prevail and above data & pictures are only for reference.