



Cutting | Bending | Welding | Automation

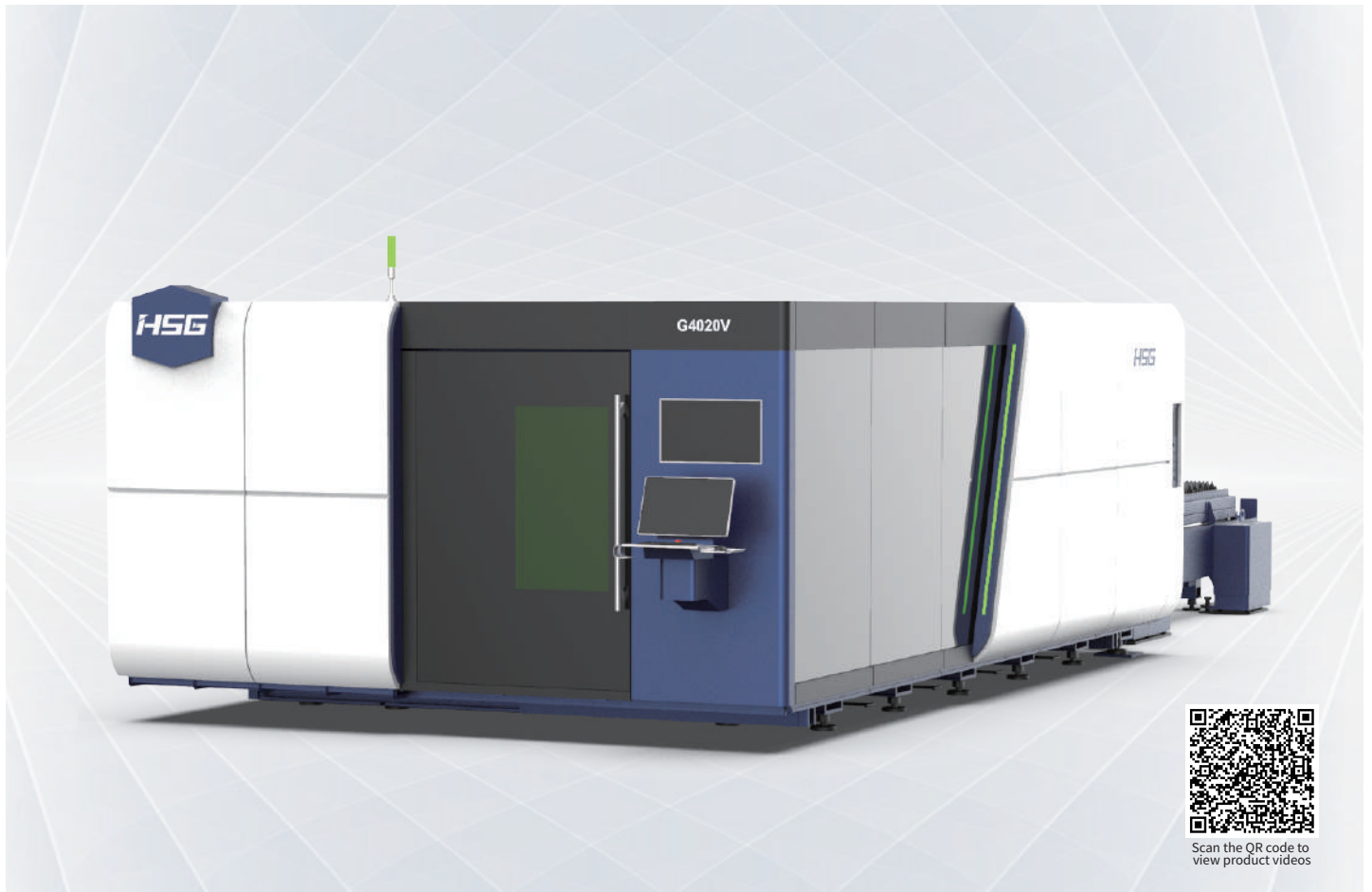


GV

▪ Pilot Series 6G All Linear Motor Fiber Laser Cutting Machine ▪

GV 6000-60000W

Pilot Series 6G All Linear Motor Fiber Laser Cutting Machine



Technical Parameters

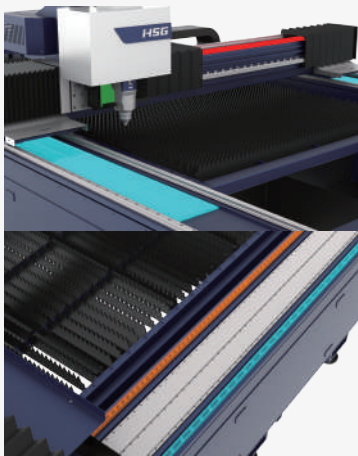
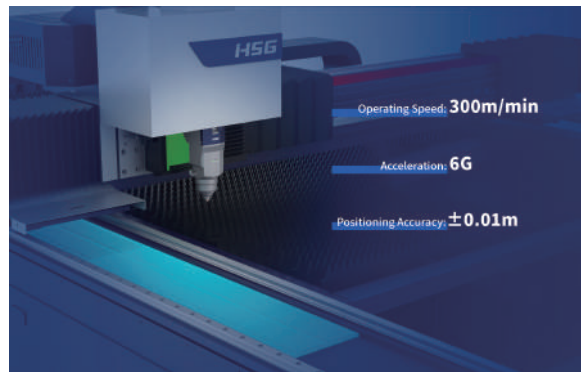
Technical Parameters	G4020V
Power	6000W-60000W
Processing format (L*W)	4064mm*2040mm
X/Y-axis positioning accuracy	±0.01mm/m
X/Y-axis repositioning accuracy	±0.01mm
No-load speed	300m/min
Acceleration	6G

* Machine appearance, technical parameters, function description, data comparison shown in this page are from HSG in-house laboratory. All testing results and experimental data shall be subject to real machine.

▶

Highly Dynamic Performance

- Operating Speed: 300m/min
- Acceleration: 6.0G
- Positioning Accuracy: $\pm 0.01\text{m}$



▶

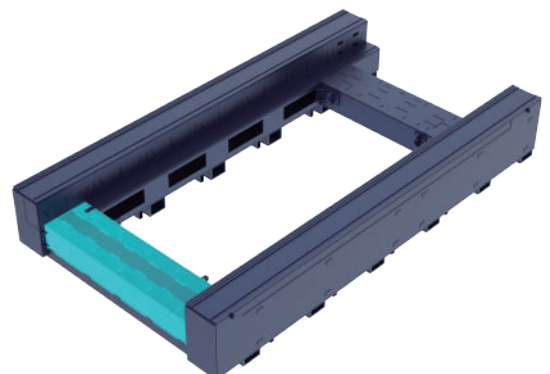
High-load Double Rails Structure Assists Stable Processing

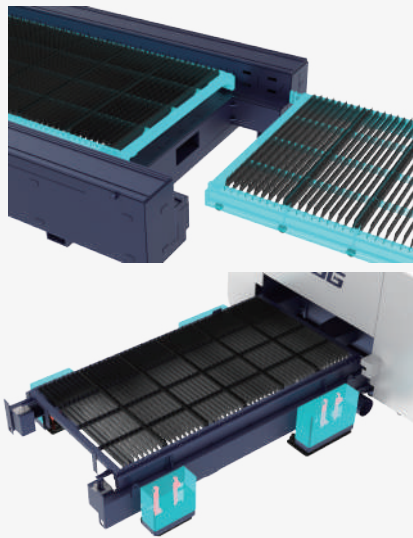
- GV Series selects German rails which both roller guider and measuring guider can provide stable and reliable processing for users. Double rails with high load, rigidity.

▶

Special Machine Bed for High Power

- The machine bed is welded with a number of ultra-thickness sheets. The machine bed is designed in special hollow structure. There is no bed link at the bottom of the laser cutting area, and the bed is not easy to be affected by heat, which is stable and durable.



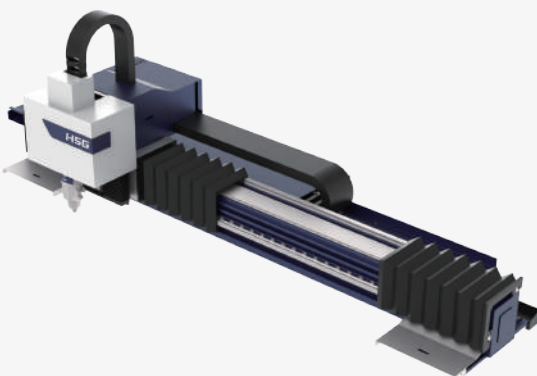


Scientific Configurations Build High-load and Eco-friendly Processing

- GV Series applies professional German hydraulic station to make work station with higher load capacity.
- Equipped with scientific dust removal system, GV Series can be easy to process sheets environmentally. The two sides of the following zoned ventilation, following the cutting position to open the dampers independently, to ensure that the cutting area of the optimal ventilation effect.

Numerous Useful Functions , Easy Operation

- The GV comes with a variety of machining functions to assist the operator in easy machining optionally.
- Automatic loading and unloading and material tower
- Automatic nozzle replacement
- Center control system
- Visual edge finding
- Visual residual material

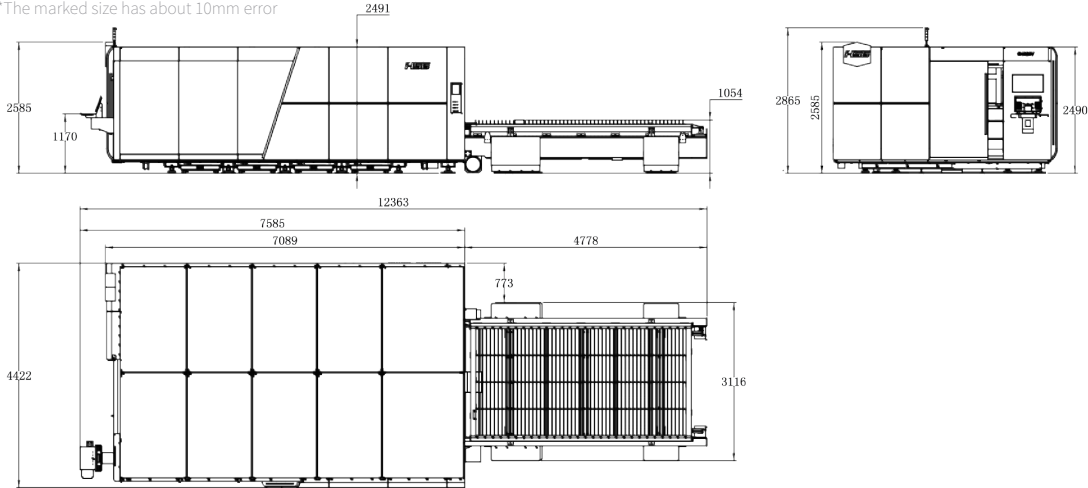


High-speed Dynamics for Luxury Cutting Experiences

- GV Series matches with professional and advanced triaxial linear motor, which is characterized by super high speed, acceleration, repeatability and other advantages. The ultimate dynamic performance with micron-size precision of machine bed to create luxury cutting experiences.

Machine Foundation

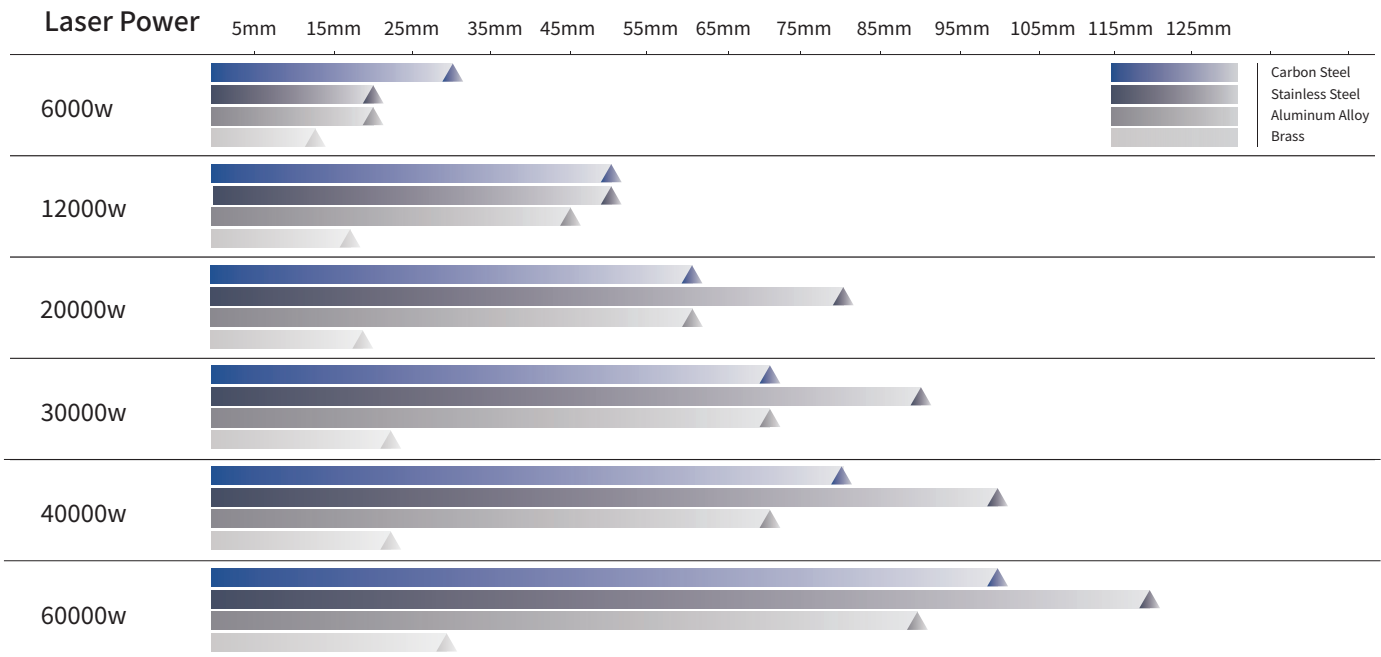
*The marked size has about 10mm error



Cutting Samples



Cutting Capacity



The actual machines shall prevail and above data & pictures are only for reference.