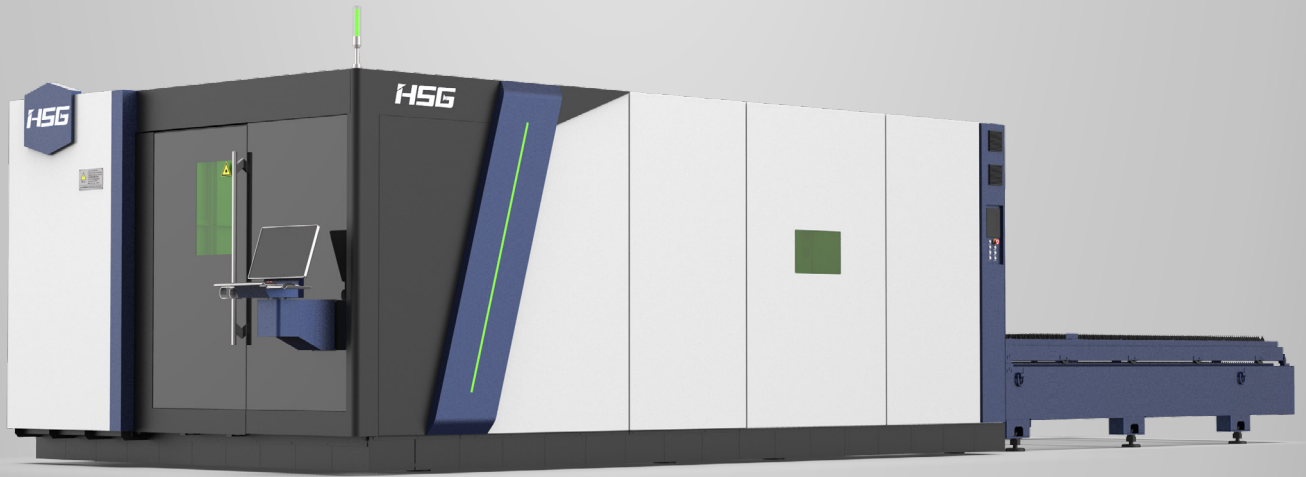


GH SERIES

High Performance Fiber Laser Cutter

3000 - 30000W



FEATURES



HSG Bus-based Control System

EtherCAT bus enables high-speed response with anti-interference capability and simplified electrical maintenance, while automated handling of machine maintenance includes real-time monitoring of key components, ensuring timely reminders for regular upkeep.



Brand-new Aluminum Beam

The new fifth-generation 6-series aluminum beam has 20% less weight and 15% more torsional resistance than the previous generation. Lightweight design beams play a high dynamic performance of the equipment to improve processing efficiency.



Bus-based Laser Cutting Heads

With power options from 10kW to 40kW, this system ensures precise, stable cutting of thick sheets. Optical filming technology prevents lens pollution, maintaining clarity and performance, while real-time laser focus monitoring optimizes results. A bus-based height adjustment system enhances accuracy and efficiency.



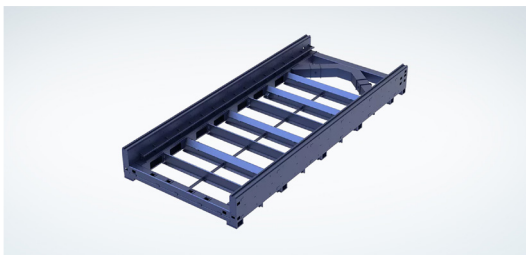
Enhanced Heat Protection

The material waste device features high-density, heat-resistant plates, effectively protecting the machine bed from heat damage.



High-precision Transmission System

Selected professional speed reducers, high-precision racks, guide rails and other accessories are used to construct the high-accuracy transmission system to ensure stable operations.

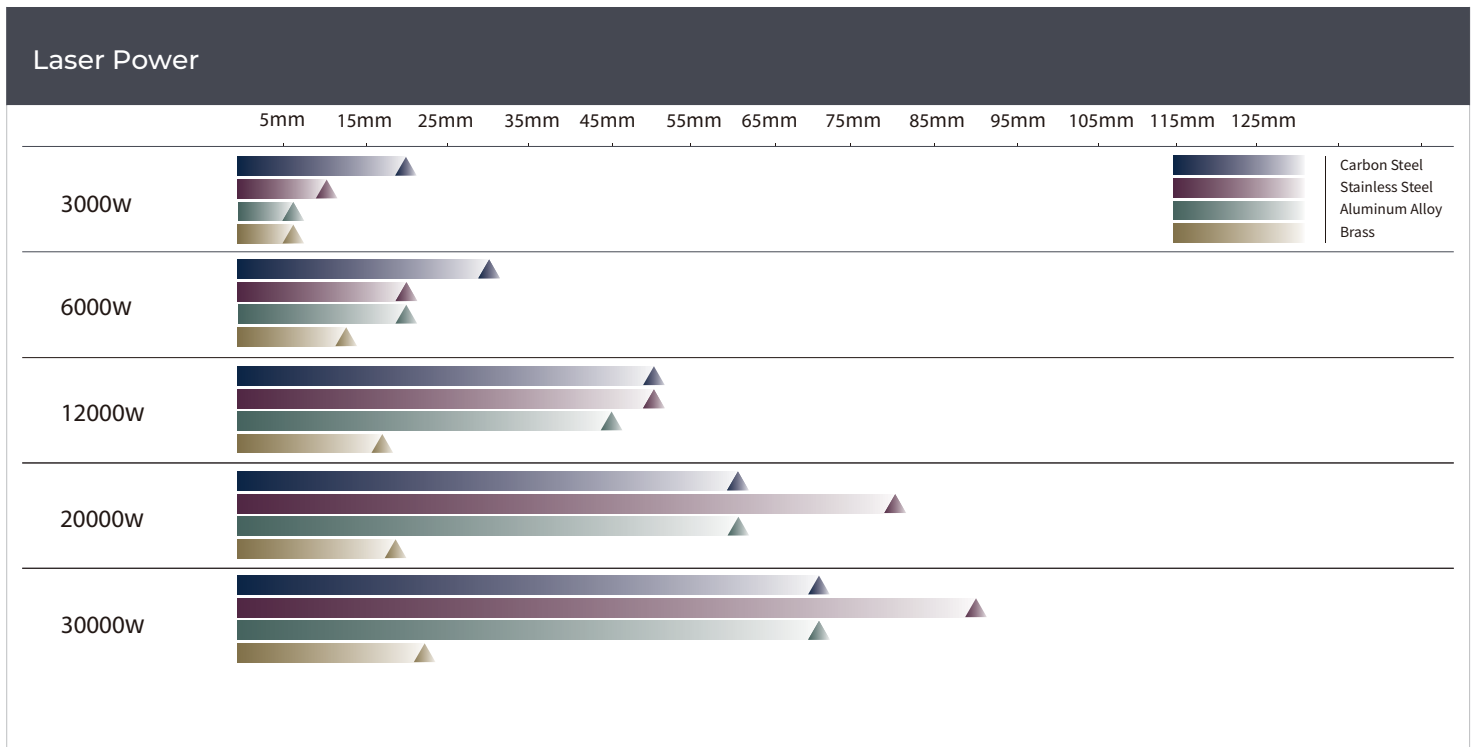


Upgraded Matrix Machine Bed

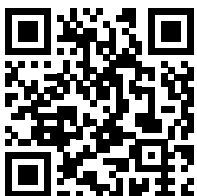
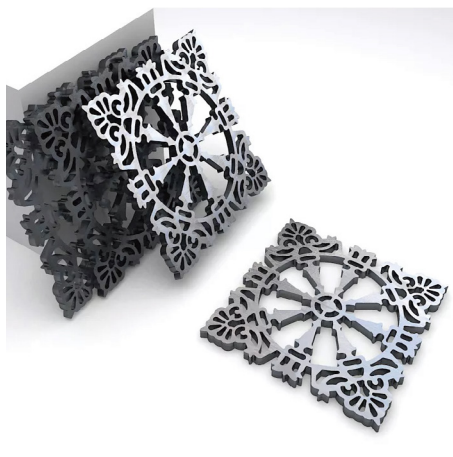
The innovative matrix machine bed and cross-section welding design significantly improve structural rigidity while minimising external impact.

SPECIFICATIONS

Parameters	G3015H	G4020H	G6025H	G8025H	G12025H
Processing Format (LxW) (mm)	3048 x 1524	4064 x 2032	6096 x 2540	8150 x 2540	12500 x 2540
Power (kW)	3 - 30	3 - 30	6 - 30	12 - 30	12 - 30
X/Y Axis Positioning Accuracy	±0.03 mm/m	±0.03 mm/m	±0.03 mm/m	±0.03 mm/m	±0.03 mm/m
X/Y Axis Repositioning Accuracy	±0.02 mm	±0.03 mm	±0.03 mm	±0.03 mm	±0.03 mm
Max. No-load Speed	200 m/min	200 m/min	200 m/min	200 m/min	200 m/min
Max. Acceleration	4G	2.8G	2.8G	2.8G	2.8G
Overall Capacity (kW) / Current (A)		26 / 52 (300W) 36 / 72 (6000W) 57 / 113 (12000W) 84 / 167 (20000W) 118 / 235 (30000W)	39 / 77 (6000W) 59 / 118 (12000W) 86 / 173 (20000W) 120 / 241 (30000W)	59 / 118 (12000W) 86 / 173 (20000W) 120 / 241 (30000W)	62 / 124 (12000W) 89 / 179 (20000W) 123 / 247 (30000W)
Max. Loading Weight (kg)		1570 (3-6kW) 2500 (12-20kW) 3800 (30kW)	2950 (3-6kW) 4800 (12-20kW) 7000 (30kW)	6300 (12-20kW) 9400 (30kW)	9500 (12-20kW) 14500 (30kW)
Overall Dimensions (LxWxH) (mm)		11450 x 3620 x 2480	16250 x 4150 x 2480	20700 x 4150 x 2480	29375 x 4150 x 2480
Machine Weight (kg)		8800 (3-6kW) 9000 (12-20kW) 9500 (30kW)	14500 (6kW) 16000 (12-20kW) 17300 (30kW)	22500 (12-20kW) 23800 (30kW)	31500 (12-20kW) 33200 (30kW)



CUTTING SAMPLES



lasermachines.com.au

1300 561 963

Factory 17 / 116 - 118 Abbott Rd,
Hallam, VIC 3803

Unit 2 / 56 Central Hills Drive,
Gregory Hills, NSW 2557

LASER MACHINES