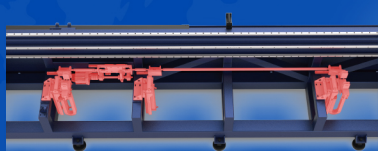


Chuck Jumping for Short Tailings

Standard equipped with chuck jumping of the cylinder and R1 Series can shorten the large amplitude of tailing length through chuck jumping. Jumping type of high-precision cutting can ensure the cutting accuracy of long tubes by chuck displacement. Optional servo chuck jumping can finish chuck jumping action accurately and efficiently.



Follow-up Support for High Precision

The machine bed is equipped with highly sensitive and independent servo follow-up support to provide enough support force in rotation cutting and achieve high cutting accuracy.

Sample



1.5kW-3kW

R1

High-speed Tiny Tube Laser Cutting Machine

R1

Cutting Capacity

Φ6 - Φ120mm

□6*6 - □85*85mm

Rectangular diagonal ≤120mm



* Machine appearance, technical parameters, function description, data comparison shown in this page are from HSG in-house laboratory. All testing results and experimental data shall be subject to real machine.